



Commercial Quotation March 2009

www.desislava20granulators.com

E-mails: desislava20@fastbg.net ; ktomov@usa.com

DUNS number: 55-257-6134

**GRANULATOR KOMPASS STRENGTHEN DESIGN
SUITABLE FOR DRY GRINDING OF TYRE BUFFINGS
WITH SIZES:**

ABOUT 50 mm X 20 mm X 10 mm (THICKNESS)

UP TO END MATERIAL WITH SIZES 2-4 mm

WITH PRODUCTIVITY PER HOUR UP TO 1'900 kg AT THE INPUT

GRANULATORS KOMPASS 800/1600 OPEN ROTOR (CS) CARBON STEEL (Fine grinding)

Purpose	<p>Dry Grinding of TYRE BUFFINGS</p> <p>Note: All metal admixres should be separated from the INITIAL material.</p> <p>WEIGHT OF THE GRANULATOR 19'000 KG</p> <p>CAPACITY: Up to 1'900 kg per hour at the input</p> <p>Max. sizes of the initial material: about 50 mm X 20 mm X 10 mm(THICKNESS)</p>
Motors	<p>160 kW / 1500 rpm / IP54 / 50 Hz / 3 phases / 400 V</p> <p>1.5 kW for the hydraulic unit suitable for the opening of the machine</p> <p>1.5 kW for the hydraulic unit suitable for the opening of the screen cradle</p>
Rotor	<p>Straight/ 9 rows of fly knives</p> <p>Cutting Cylinder of the rotor 800 mm X 1600 mm</p>
Knives	<p>36 pcs. Fly knives X 400 mm</p> <p>12 pcs. Bed knives X 400 mm (slant) – THREE ROWS of the bed knives</p> <p>The kind of the knives steel is: X153CrMoV12 = D2 = 1.2379</p>
Screens holes	4 mm
Bearings	SKF
Motor control	Will be manufactured with units from " Telemechanique "- France
Note	The granulator will be equipped with cooling system of the rotor and the cutting chamber.

**Note: The motor 160 KW will be delivered from Italy
The motors 1.5 kW and the other small motors are made in Bulgaria**

The Granulator is equipped with Hydraulic unit suitable for the opening of the screen cradle, the Preventive Clutch between the shaft and the pulley for the rubber belts from the motor drive will be very useful if into the cutting chamber fail big piece which can to block the rotor - this unit will rescue the granulator from big damages, all knives (bed and fly) are adjustable, Hydraulic unit for removing of the hopper - Full protection at operation - Total stop before various accesses to the machine - Full automated control - Easy change of the screen - A jig where the rotor knives can be pre-set outside of the machine so that you can change them quickly without adjusting them in the machine. The Granulators are Coated with Zinc before the painting.

Belt Conveyor 1000 / 9000 (Feeding belt)

a) Sizes:

- effective width – 1000 mm
- Height of the axis of the charge shaft – 1000 mm
- Height of the axis of the discharge shaft – 3100 mm
- distance between the shafts – 9000 mm

b) Leading:

- side of assembly – left in the direction of the belt motion
- Ø pushing drum – 320 mm
- Ø pulling drum – 320 mm
- el. motor – 2,2 kW/400 V/50 Hz/1500 rpm /4 pol.

c) Rubber belt:

- with increased performance for hardness of cutting and strokes
- thickness – 8 mm
- vulcanizing way of connection
- cleats – height 20 mm, width 2 x 350 mm, distance 500 mm

d) Legs:

- regulation +/- 150 mm
- 4 pieces. / 2 pieces with interlock/, Ø wheels 150 mm
- paint:
 - body blue - Blu Ral 5002
 - guard - yellow Ral 1003

**Possibility for assembly of metal detector
Possibility for assembly of metal separator for Fe.**

DISCHARGE PNEUMATIC SYSTEM (DPS) CARBON STEEL (CS)

Purpose	The DISCHARGE PNEUMATIC SYSTEM - "DPS" contain: fan - working pipes - cyclone - cyclone stand - dust collection system and the stand for this system. Textile (WOOL) separation plant.
Motors (power)	7.5 kW / 1500/1750 rpm / 50/60 Hz / 400/440/460/480 V
Warranty	12 months from the date of delivery. The warranty doesn't include the servicing. If it is needed to be sent spare parts the warranty terms cover the cost of the spare parts only Ex Works (the cost of the transport of the spare parts is not included in the warranty terms).

WARRANTY FOR THE GRANULATOR:

12 months from the date of delivery (the warranty doesn't include the cutting instruments, screen and the servicing).

If it is needed to be sent spare parts the warranty terms cover the cost of the spare parts only Ex Works.

The cost of the transport of the spare parts is not included in the warranty terms.

CHILLER

WATER COOLED CHILLER W#W 53 C

Max. cooling capacity	55 kW (+5 °C evp +35 °C cond)
Max. operation power	16 kW

Overall dimensions:

width	600 mm
length	950 mm
height	1400 mm
weight	250 kg
connection tube sizes	4 X Ø 35 copper tubes for weldings
working temperature range of the chiller	- 5 °C up to + 20°C , if the evaporation temperature is under 0°C , it is obligatory the using of Ethylene Glycol

The chiller is equipped with water pump for the working water with free pressure 9 m H₂O (90 kPa)

The pressure losses of the outside water are 4 m H₂O (40 kPa)

The chiller will be equipped with 120 Liters water tank for the cooled water.

The chiller will be equipped with 2 SCROOL COPELAND compressors and if here have a need the cooling power can be reduced.

The chiller will be equipped with plate heat exchangers.

The chiller will be equipped with copper-aluminum outside condenser unit with two fans.

Overall dimensions of the copper-aluminum outside condenser:

width	300 mm
length	1450 mm
height	1100 mm

The chiller will be equipped with adjustable expanding valve, if have a need the evaporation temperature can be adjusted.

The el. equipment is from MOELER Germany

The chiller's control will be with complete microprocessor equipment with digital display.

Together with the equipment, we will send and detailed instruction for assembling and servicing – including text information and diagrams.

If have a need to be sent people for technical assistance at the plant of the customer, it will be object of an additional agreement.

Manufacturing time: 45 working days

Transit time: 20 days

Warranty	12 months from the date of delivery. If it is needed to be sent spare parts the warranty terms cover the cost of the spare parts only Ex Works. The warranty doesn't include the servicing (the cost of the transport of the spare parts is not included in the warranty terms).
-----------------	---

PRICES EXW

Granulator	
Kompass 800/1600 160 kW Open Rotor (Fine Grinding)	EUR
Chiller	EUR
Metal Separator	EUR
Feeding Belt Conveyor	EUR
DPS & Wool / Textile Separation Plant 7.5 kW	EUR
Central El. Control	EUR
TOTAL	EUR
PAYMENTS	# First Payment (Deposit) 40 % With the order # Second Payment (Final payment) 60% Before the shipment
WAY OF PAYMENT	By Free Bank Remittance

- Option 1:
- Option 2:
-
-

Option 3: Additional Screen 4 mm = EUR

Knives set with welded Hard-alloy cutting edge, the knives can be sharpened - by sharpening machine with Diamond disk

Additional knives set: = EUR

THE LIFE OF THE KNIVES WITH HARD-ALLOY CUTTING EDGE WILL BE ABOUT 800-1000 TONNES.

Knives set made from D 2 Steel

Additional knives set: = EUR

GRANULATORS



GRANULATORS



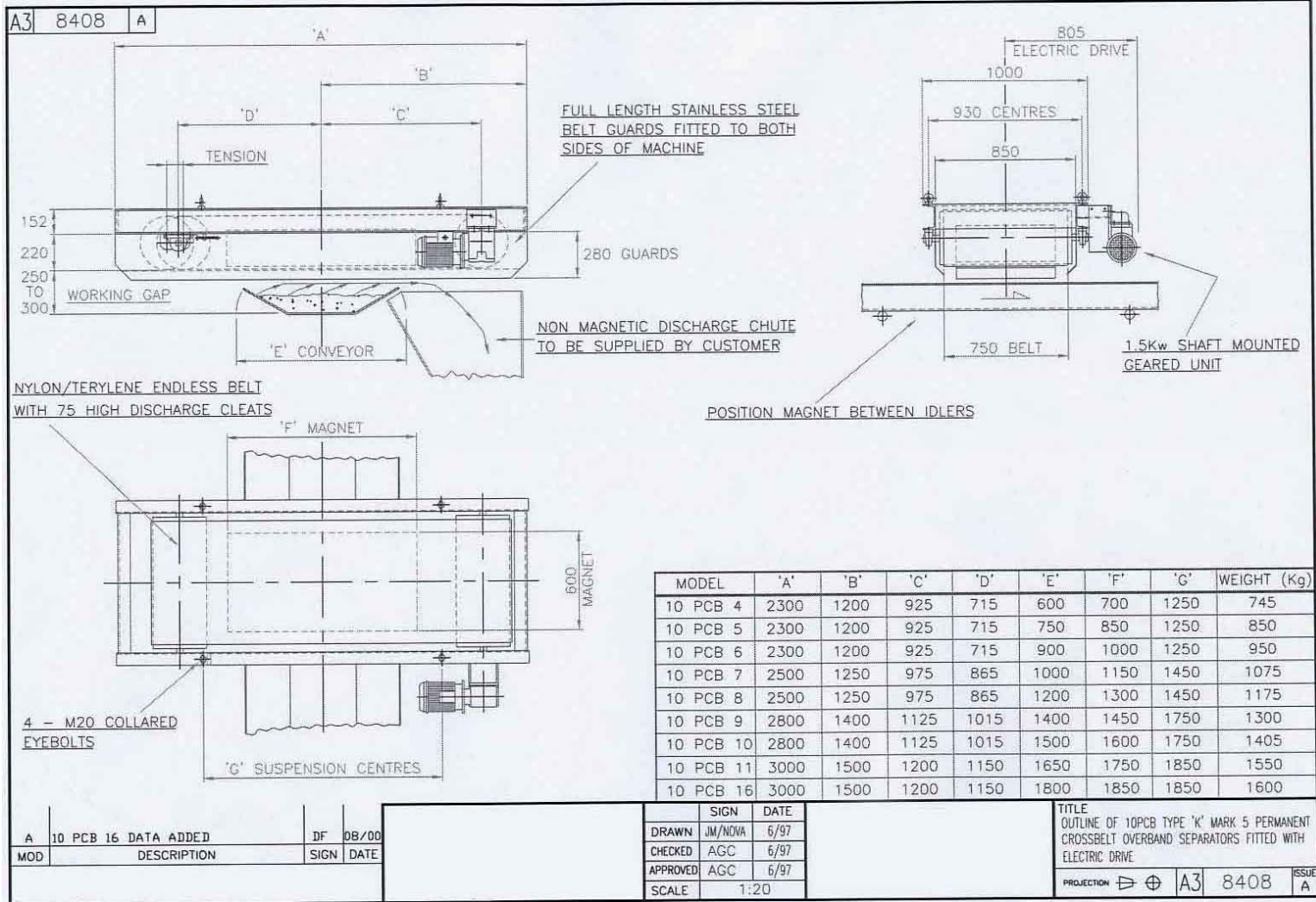
CHILLERS



MASTER MAGNETS

CROSSBELT PERMANENT MAGNETIC OVERBAND SEPARATOR,
complete with electric drive operating across clients 1000/1050mm wide belt.

SPECIFICATION	PS1221
OUTLINE DRAWING	A3/8408
APPLICATION	Recommended normal operating gap between belt and magnet 250mm (max.operating gap 300mm) Magnetic intensity at 250mm: In excess of 450 gauss.
OPTIONAL EXTRAS	Refer to specification
COMPLETION	4 - 5 Working weeks.
PAYMENT TERMS	To be agreed
TERMS	Master Magnets standard terms and conditions of sale
CARRIAGE	Extra at cost



**PRODUCT SPECIFICATION PERMANENT CROSS
BELT OVERBAND SEPARATORS.**

To be read in conjunction with Permanent Overband Separator Leaflet – AB/03-01
DRAWING No A3.8408 - ELECTRIC DRIVE.

MAGNET SYSTEM :	COMPUTER DESIGNED, STRONTIUM FERRITE CERAMIC SYSTEM MOUNTED ONTO HEAVY DUTY BACKBAR, HOUSED IN HARD WEARING NON MAGNETIC STEEL CASE. THE MAGNETIC INTENSITY IN EXCESS OF 450 GAUSS AT 250mm WORKING GAP IS RETAINED INDEFINITELY.
MAGNET CIRCUIT : SUPPORT FRAME:	LOW CARBON STEEL WELDED CONSTRUCTION FROM HOT ROLLED STEEL SECTION TO B.S. 4 : PART 1 : 1980. PROVIDED WITH EYE BOLTS FOR SUSPENSION AND WHERE POSSIBLE THE LENGTH OF FRAME IS KEPT WITHIN E.C. ROAD REGULATIONS WHICH ALLOWS THE SEPARATOR TO BE LEFT IN PLACE DURING TRANSPORTATION ON MOBILE PLANT.
PULLEYS:	WELDED STEEL CONSTRUCTION, CROWNED FACE, TWO PULLEY SYSTEM, WITH SHAFTS WELDED INTO BOSSES. TAIL PULLEY IS FITTED WITH BEARING SLIPPER PLATES FOR EASE OF BELT TENSIONING AND TRACKING.
BEARINGS: DRIVE:	SELF LUBE SEALED FOR LIFE PILLOW BLOCK TYPE, FITTED WITH SAFETY CAPS AS STANDARD. HYDRAULIC OR ELECTRIC DRIVES CAN BE SUPPLIED FOR THIS RANGE OF SEPARATORS DEPENDING UPON THE MOBILE PLANT TO WHICH IT IS FITTED.
ELECTRIC DRIVE:	SHAFT MOUNTED WORM GEARED MOTOR UNIT FITTED WITH IP 54 ELECTRIC MOTOR, CONNECTED TO DRIVE PULLEY WITH A HEAVY DUTY FLEXIBLE COUPLING. DRAWING No A3.8408.
SEPARATOR BELT:	NYLON/TERYLENE CARCASE CONSTRUCTION WITH 3 AND 1.5 mm (MINIMUM) COVERS FITTED WITH VULCANISED T 75 RUBBER SLATS AT 1000mm NOMINAL SPACING. BELTS ARE VULCANISED ENDLESS.
SIDE GUARDS:	MANUFACTURED FROM T.304 STAINLESS STEEL AND FITTED AS STANDARD TO BOTH SIDES OF OVERBAND. DESIGNED TO PREVENT BELT DAMAGE DUE TO ENTRAPMENT OF STEEL BETWEEN MAGNET AND BELT AND ALSO TO PREVENT ACCESS TO PULLEY NIPPING POINTS DURING NORMAL RUNNING. IT IS THE CLIENTS RESPONSIBILITY TO ENSURE THAT THE GUARDS ARE IN POSITION AT ALL TIMES AND THAT ACCESS TO THE MACHINE IS RESTRICTED.
FINISH:	ALL STEEL WILL HAVE ONE COAT OF HIGH PERFORMANCE MODIFIED ALKYD AIR DRYING GREY PRIMER AND TWO COATS OF RAL 5019 HIGH PERFORMANCE ALKYD AIR DRYING ENAMEL.
INSTRUCTION MANUAL :	COMPREHENSIVE INSTALLATION, OPERATION AND MAINTENANC MANUAL SUPPLIED WITH EACH MACHINE.
OPTIONS : STARTER-TYPE OBMS :	A SELF CONTAINED MOTOR STARTER FOR ELECTRIC MOTOR DRIVEN MACHINES. ENCLOSED TO IP55, COMPLETE WITH START/STOP PUSH BUTTONS, LOCKABLE OFF ISOLATOR AND THERMAL OVERLOADS. SEE DRAWING A4.4112 FOR DETAILS.
SLING CHAINS :	FOR SUSPENDING OVERBAND IN WORKING POSITION.
PAINT FINISH :	SPECIAL COLOURS CAN BE PROVIDED.

If you require any further information, please contact us and we will be pleased to supply it.

We look forward to hearing from you.

Sincerely Yours,
Konstantin Tomov,
President of Desislava 20 Granulators Company

ADDRESS:

9 Zlatovrah Str.
1164 Sofia, Bulgaria
tel./fax: 359 2 870 3295
mobile: 359 896 872 859

www.desislava20granulators.com

desislava20@fastbg.net

ktomov@usa.com

Desislava 20 Granulators Company wishes you successful business!